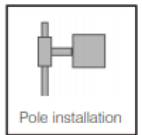
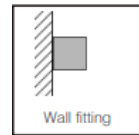
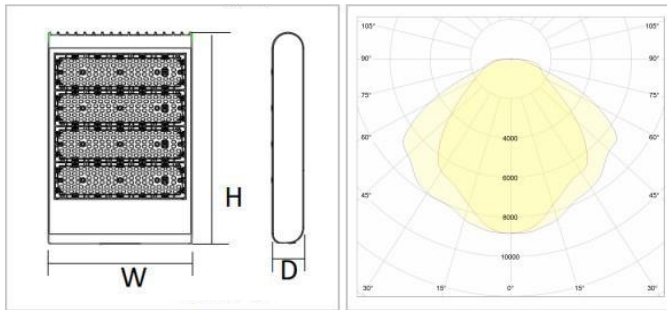


DESCRIPTION

Elenora series is a combination of slim design modern style for illuminating urban roads and parking lots.

We used the latest solid state technology from Philips for a long life illuminance and high efficiency. All our outdoor fixtures are rated for wet locations and offers variety of mounting options.

18-1/2"(H) x 12-5/8"(W) x 3-1/2"(D)



Ordering Example:
LI-FDL300

ORDERING INFORMATION

Model	Watts	Lumen	Optic	Color Temp.	CRI	Optional	Finish
LI-FDL300	300	40500	<u>A = 120 x 90</u>	1 = 4000K 2 = 5000K	>83	1 = Dimmable 2 = Photocell Yes	BR
	300	40500	<u>B = 150 x 105</u>		>83		

LIGHTING SPECIFICATION

Dimmable: 0~10V Dimming

- Lens: TYPE III TIR optic Lens
- LED: Philips Lumileds Luxeon 3030 High flux LED
- Solid state lighting technology for long life, no maintenance needed and high-efficiency
- Cord type: 6' SJTW 18/3 AWG cable
- Total lumens: 39000LM/37300LM
- Color temperature: 5000K/4000K/3000k
- Color rendering index: 82~84
- Beam Angle: 120°x90

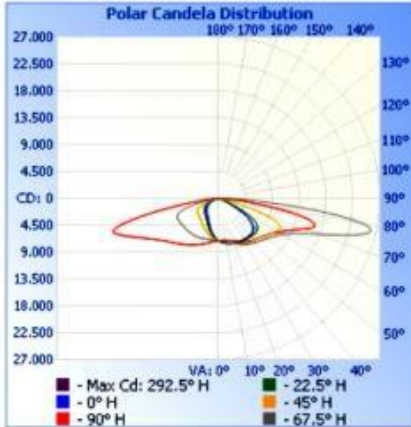


HOUSING SPECIFICATIONS:

- Die-cast Aluminum housing with powder coat finish (Dark Bronze)
- Operating temperature: -40°F to 104°F
- Lifespan: 70,000 hr.
- IP Rating: IP65
- Effective projected areas (EPA's) are:
Front = 0.38 square feet
Side = 0.50 square feet
Face = 1.75 square feet



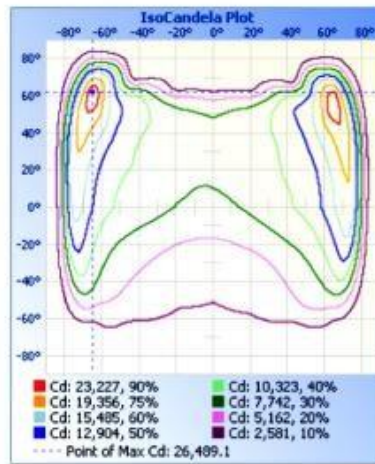
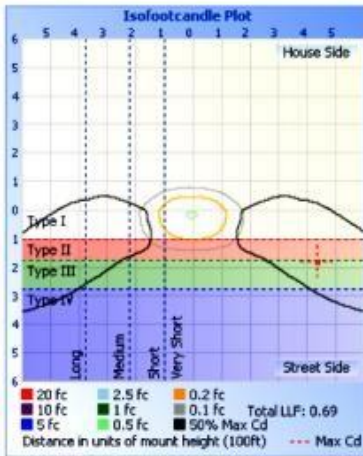
PHOTOMETRIC:



Illuminance at a Distance

	Center Beam fc	Beam Width	
4.0ft	443.7 fc	5.8 ft	1.5 ft
8.0ft	110.9 fc	11.6 ft	3.0 ft
12.0ft	49.3 fc	17.4 ft	4.4 ft
16.0ft	27.7 fc	23.3 ft	5.9 ft
20.0ft	17.7 fc	29.1 ft	7.4 ft

■ Vert. Spread: 72.0°
■ Horiz. Spread: 20.9°



MOUNTING OPTIONS:



M1

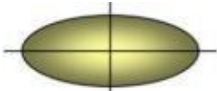


M2

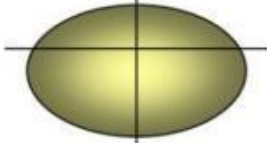


M3

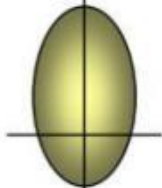
LENS TYPES ILLUSTRATED



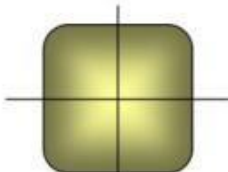
Type 2 is still linear but wider in the front to accommodate 4 lane roadways, or wider drive lanes.



Type 3 (commonly known as a "Bat-Wing") is suitable for perimeters, often where other interior pole placements fill the site



Type 4 (commonly known as a "Forward Throw" or Asymmetric) is best along perimeters where spill light is a concern or there are no place to add poles within a site.



Type 5 – is available in a round or square pattern. Best suited for interior areas within a site or on the median of 4-6 lane roadways.