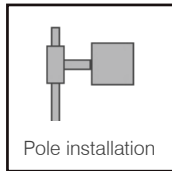
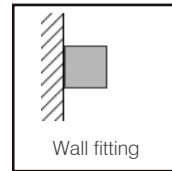


DESCRIPTION

AURA series is the most economical outdoor luminaire suitable for parking lot lighting, and street lighting. Individual engines with aluminum heatsinks provide easy thermal management.



--	--	--	--	--	--	--	--

ORDERING INFORMATION

Model	Watts	Lumen	Optic	Color Temp.	CRI	Optional	Finish color
LI-PLYR298-W220	220	24000	A = Type 3 (Asymmetric)	0 = 4000K 1 = 5000K	80	1 = Dimmable 2 = Occupancy Sensor 3 = Photocell	BR

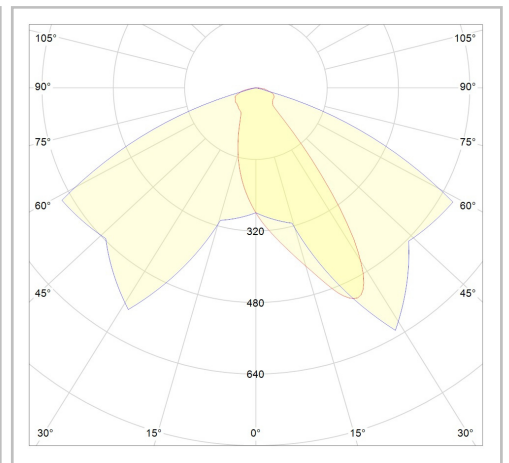
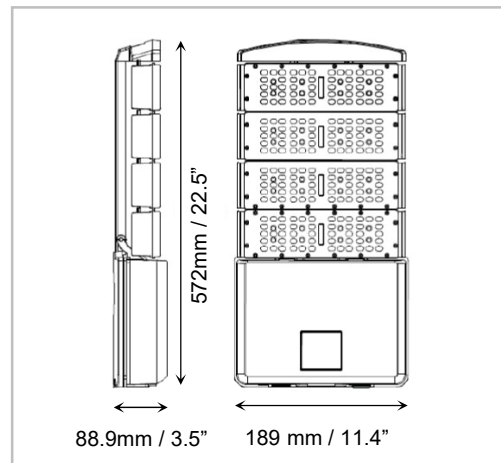
Ordering Example:

LI-PLYR298-W220-220-A-1-1-BR

Project name:



- Material: Aluminum Die Casting. Salt mist resistance & anti aging. High thermal conductivity.
- Led type: Phillips Lummi LED'S LUXEON 3030 2D.
- Electrical: 120~ 277Vac, 50/60Hz Driver included.
- Power factor: $\geq 95\%$
- Led efficiency: 130 lm/W
- Color temperature: 4000K, 5000K
- Operation temperature: -35°C to 55°C
- Color Rendering Index (CRI): ≥ 75
- THD%: 16.3-17.9
- IP Rating: IP65

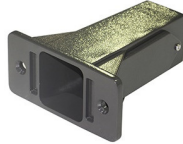


Project name:



FIXTURE MOUNTING OPTIONS

M1 = Straight Arm Mount



M2 = Slip Fitter



M3 = U-Bracket Trunnion



Ordering Example:
LI-PLYR298-W200-200-A-1-1-BR-M1

Project name:

