

DESCRIPTION

**MATERIAL**

Aluminum Die Casting.  
Salt mist resistance & anti aging.  
High thermal conductivity.

**REFLECTOR - DIFFUSER**

UV & Fire resistant high out put PC lenses.

**LED TYPE**

Phillips Lummi LED'S.

**Electrical**

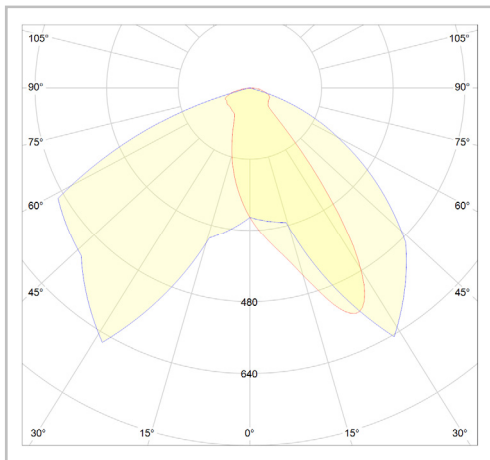
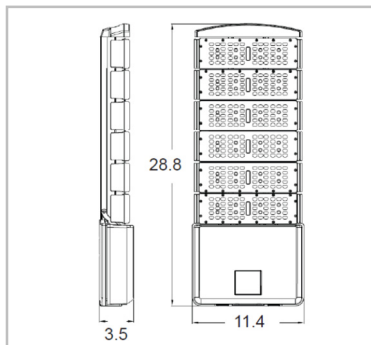
100-277V Driver included

**LED EFFICIENCY**

130 lm/W

**IP RATING**

IP65



--	--	--	--	--	--	--	--

**ORDERING INFORMATION**

Model	Watts	Lumen	Optic	Color Temp.	CRI	Optional	Finish color
LI-PLYR298-W300	300	35000	A = Type 3 (Asymmetric)	0 = 4000K 1 = 5000K	80	1 = Dimmable 2 = Occupancy Sensor 3 = Photocell	BR

Ordering Example:

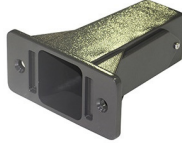
LI-PLYR298-W300-300-A-1-1-BR

Project name:

# AURA

## FIXTURE MOUNTING OPTIONS

M1 = Straight Arm Mount



M2 = Slip Fitter



M3 = U-Bracket Trunnion



Ordering Example:  
LI-PLYR298-W300-300-A-1-1-BR-M1